

M

OCKRIDGE
BESPOKE CARPENTRY



TEL: 01179 902953

HERITAGE



ABOUT THE RANGE

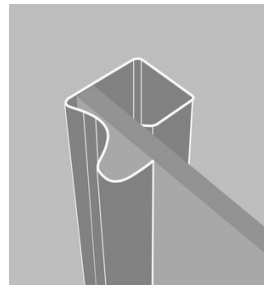
The Heritage range is our lowest cost option without sacrificing any quality. Hand made from a 25mm wide steel frame and available in any combination of designs using the panels and design options at the bottom of the brochure.

FRAME COLOURS

- White
- Silver
- Cashmere

TRACK DEPTHS

Top: 88mm
Bottom: 57mm



CLASSIC



ABOUT THE RANGE

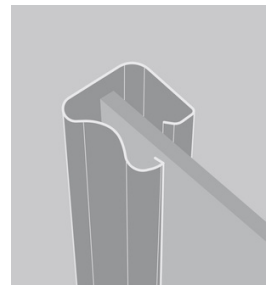
The Classic range of sliding doors offers a slightly more traditional look to doors with a broader steel 35mm frame. Again this range can be made in any combination of designs found below.

FRAME COLOURS

- White
- Silver
- Cashmere
- Light Grey
- Light Oak
- Graphite

TRACK DEPTHS

- Top: 88mm
- Bottom: 57mm



SHAKER



ABOUT THE RANGE

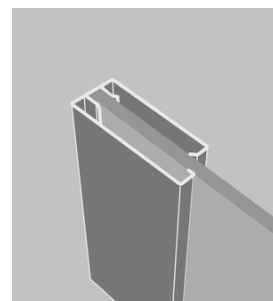
The Shaker range is a very popular option that transforms a traditional look into something very modern. The frame is 75mm and made from British Steel to create a very stand out design.

FRAME COLOURS

- White
- Walnut
- Cashmere
- Light Grey
- Light Oak
- Graphite

TRACK DEPTHS

Top: 88mm
Bottom: 57mm



CURVE



ABOUT THE RANGE

The highest level of luxury in sliding doors. Our aluminium systems include ultra smooth rolling hidden mechanisms and ultra low profile tracking. The Curve range comes with inset soft closing dust strips to create a beautiful finish.

FRAME COLOURS

- Satin Silver
- Brushed Black

TRACK DEPTHS

Top: 76mm
Bottom: 49mm



SHAKER LUXE



ABOUT THE RANGE

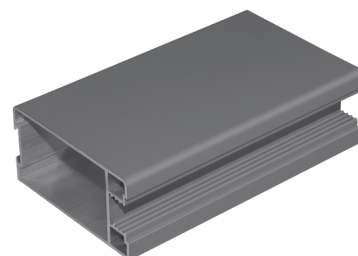
Another stunning Shaker option but in a light-weight premium aluminium finish. Our aluminium systems include ultra smooth rolling hidden mechanisms and ultra low profile tracking. The Shaker Luxe range comes with inset soft closing dust strips and pre-installed soft-close mechanisms as standard giving that feeling of ultra luxury.

FRAME COLOURS

- Dust Grey
- Cashmere
- White

TRACK DEPTHS

Top: 76mm
Bottom: 49mm



FRAME OPTIONS

There is no such thing as a lower quality frame
in our sliding doors.
It is simply down to your design preference.
Prices increase from top to bottom.



Heritage

- 25mm Steel Frame
- Smooth & Quiet Rolling
- Endless Design Options
- Optional Soft-Close Mechanisms **supply only*

Frame Samples
Available



Classic

- 35mm Steel Frame
- Smooth & Quiet Rolling
- Endless Design Options
- Optional Soft-Close Mechanisms **supply only*



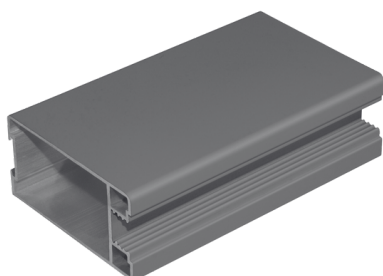
Shaker

- 75mm Steel Frame
- Smooth & Quiet Rolling
- Endless Design Options
- Optional Soft-Close Mechanisms **supply only*



Curve

- 36mm Premium Aluminium Frame
- Smooth & Quiet Rolling
- Endless Space Saving Design Options
- Hidden wheels & soft close dust strips as standard
- Optional pre-installed soft close mechanisms



Shaker Luxe

- 60mm Premium Aluminium Frame
- Smooth & Quiet Rolling
- Endless Space Saving Design Options
- Hidden wheels, soft close dust strips and pre-installed soft close mechanisms on outer doors as standard

Our Design Options

Looking for a custom design? Just let us know and we can help with the design process.



SAFETY BACKED GLASS



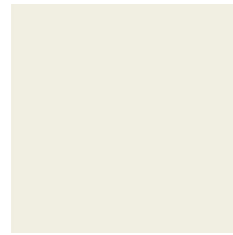
Mirror



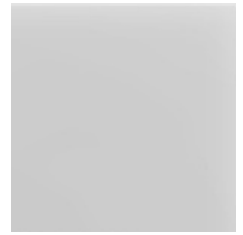
Grey Mirror



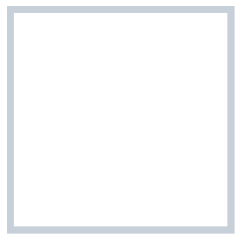
Bronze Mirror



Soft White



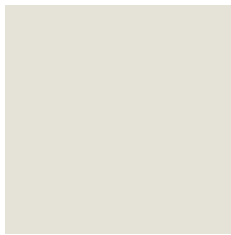
Chalk Grey



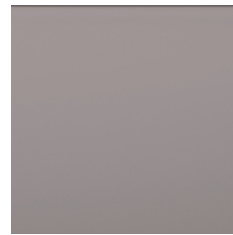
Pure White



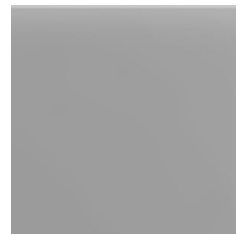
Aluminium
Rich



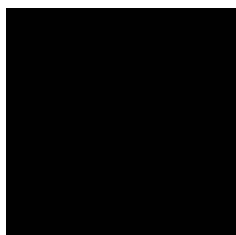
Pearl White



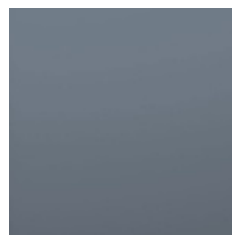
Taupe Metal



Storm Grey



Black



Blue Shadow



Cashmere



Anthracite

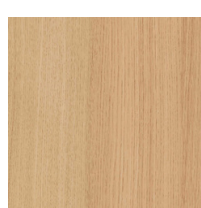


Grey Metal

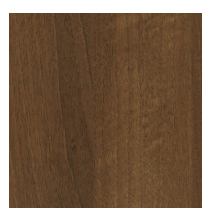
WOOD



White Plain



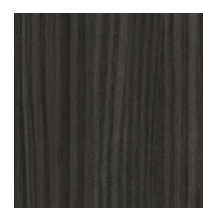
Light Oak



Walnut



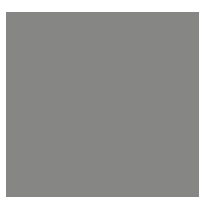
Graphite



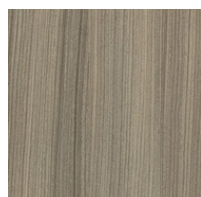
Black Havana Pine



Cashmere



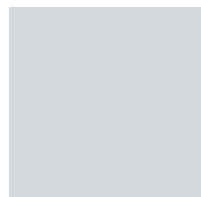
Dust Grey



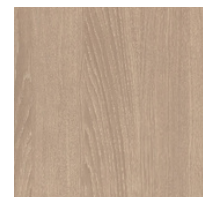
Shorewood



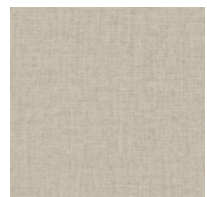
White Ash



Light Grey

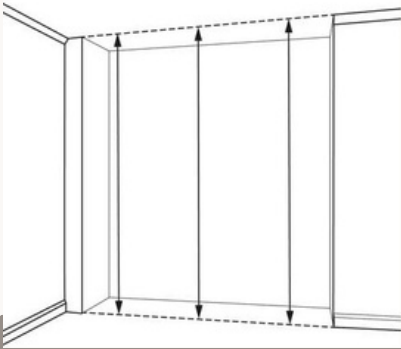


Grey Bardolino
Oak



Grey Textile

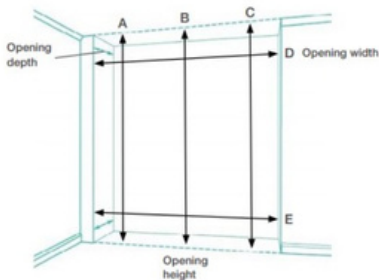
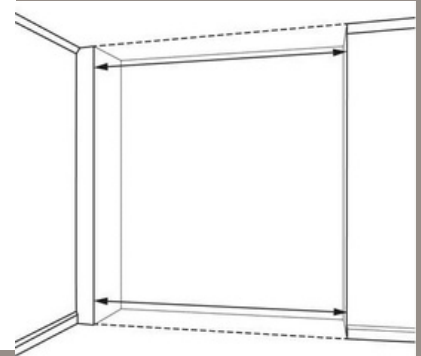
Our Measuring Guide



It's a lot easier than you may think to measure for your sliding wardrobe doors.

First we need the opening height. Measure in three different places and give us the **SMALLEST** height.

Next we need the opening width. Measure in two different places and give us the **LARGEST** width. We will work out the sizes so that your sliding doors fit perfectly.



The opening height and width is the finished space. For example, floor to ceiling.

Measuring tip: If your sizes vary, enter the **SMALLEST** Height and the **LARGEST** Width.

Once we have your opening sizes our team will then calculate for the door overlaps, tracks and mechanisms to ensure everything fits perfectly in your space.

*tracks come over-sized



ONE STOP WARDROBE SHOP



KWIKCAPS

14mm options
20mm options



HEAVY DUTY SHELF BRACKETS

100 x chrome
100 x brass



END PANELS

2800 x 655 x 18mm



FILLETS

2800 x 100 x 18mm



WAX CRAYONS

Various colours
available



INTERIOR UNITS

Various colours
available in 450mm or
600mm widths



REISSER CUTTER SCREWS

6 x sizes available



SHELF PANELS

2800 x 455 x 18mm



BLUM HINGES & MOUNTING PLATES

Nickel or Onyx
finishes



*M*OCKRIDGE
BESPOKE CARPENTRY

